

FOR IMMEDIATE RELEASE:
September 29, 2009

Contacts: Cheryl Everitt
(719) 302-6740

OR

Chad Dubs
(719) 266-6904

Woodmen Road Alignment Shifts

Beginning Wednesday evening, September 30, 2009, two alignment shifts of eastbound Woodmen Road will occur:

- The alignment will shift northward from the Hobby Lobby entrance to the Woodmen Valley Shopping Center. This will cause the westbound lanes to shift to the north as well.
- The alignment will also shift northward from just east of the intersection of Woodmen and Academy, at the Villages at Woodmen Apartments. This shift will close the right shoulder.

These alignment shifts are for underground waterline work.

The above activities are dependent upon weather and resource availability.

Construction activities continue on the permanent closure of Bell Drive.

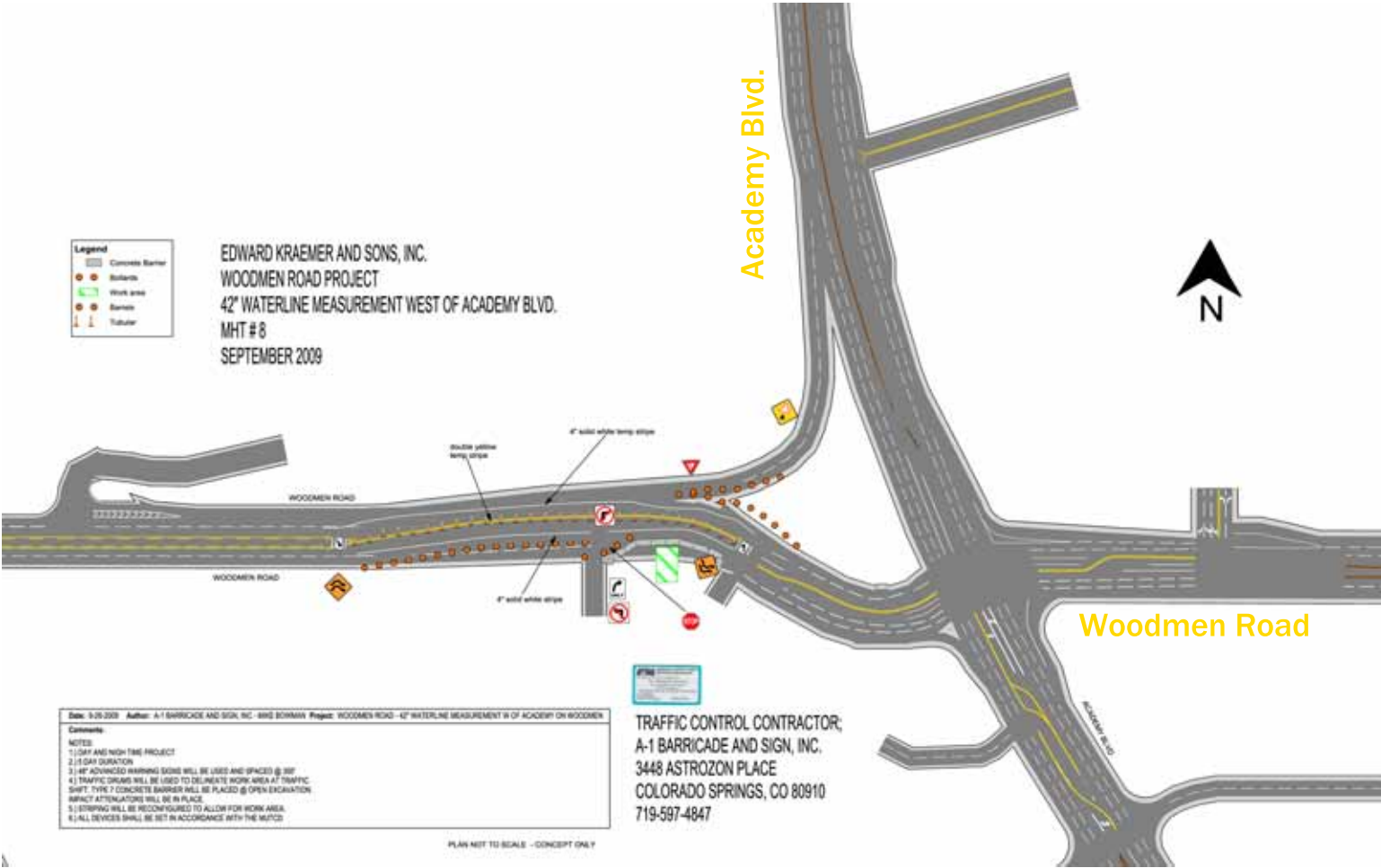
For the latest updates on Woodmen Road construction and to sign up for the latest news by e-mail, please log on to www.woodmenroad.com.

For general questions regarding City PPRTA projects, contact Sue Skiffington-Blumberg (719) 385-5254.

Legend	
	Concrete Barrier
	Bollards
	Work area
	Barricade
	Tubular

EDWARD KRAEMER AND SONS, INC.
 WOODMEN ROAD PROJECT
 42" WATERLINE MEASUREMENT WEST OF ACADEMY BLVD.
 MHT # 8
 SEPTEMBER 2009

Academy Blvd.

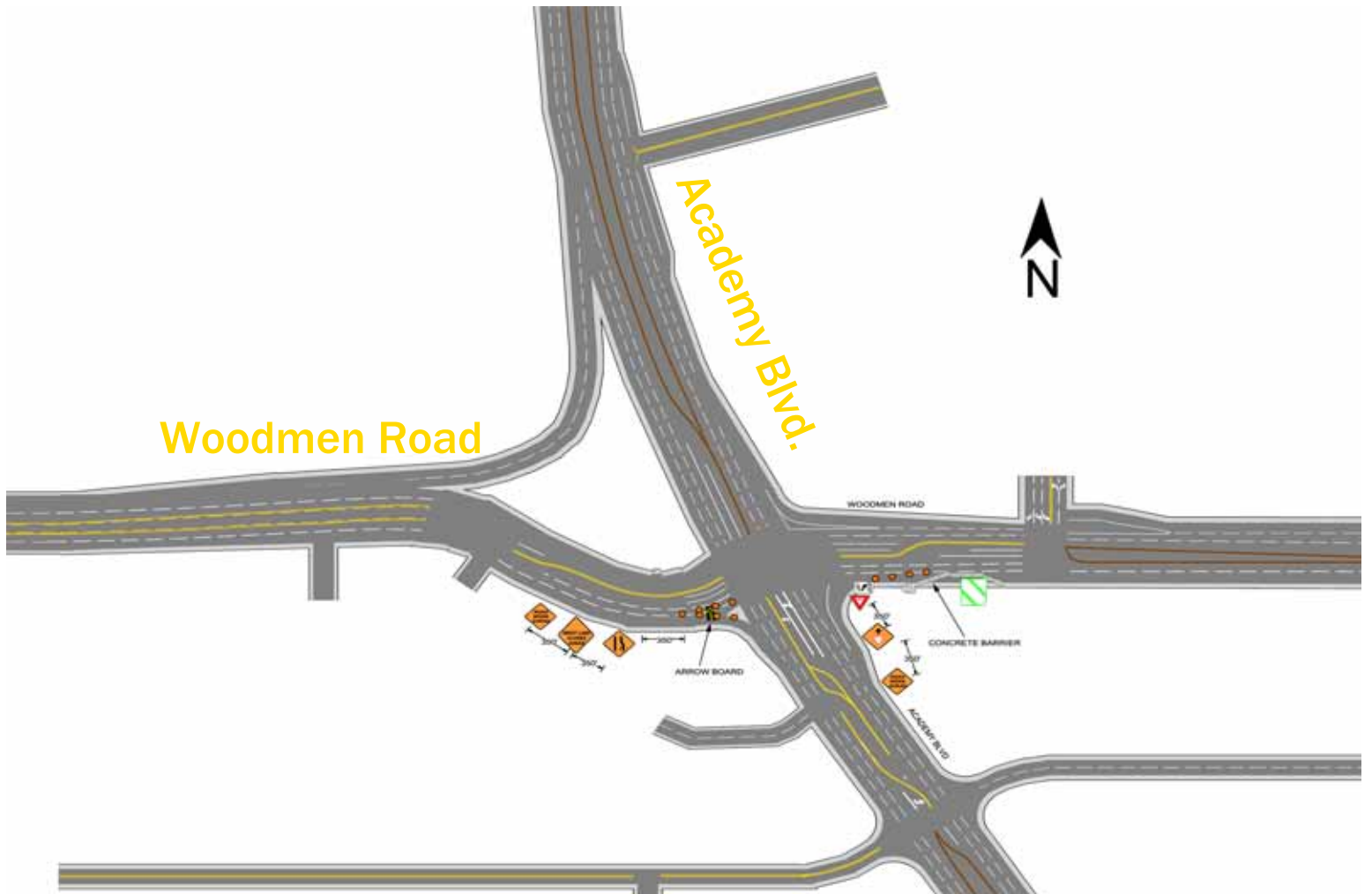


Woodmen Road

Date: 9/25/09 Author: A-1 BARRICADE AND SIGN, INC. - 892 BOHANNAN Project: WOODMEN ROAD - 42" WATERLINE MEASUREMENT W OF ACADEMY ON WOODMEN
 Comments:
 NOTES:
 1.) 5:30 AM AND HIGH TIME PROJECT
 2.) 1/2 DAY DURATION
 3.) 4" ADVANCED WARNING SIGNS WILL BE USED AND SPACED @ 300'
 4.) TRAFFIC CONES WILL BE USED TO DELINEATE WORK AREA AT TRAFFIC SHIFTS. TYPE 7 CONCRETE BARRIERS WILL BE PLACED @ OPEN EXCAVATION. IMPACT ATTENUATORS WILL BE IN PLACE.
 5.) STRIPING WILL BE RECONFIGURED TO ALLOW FOR WORK AREA.
 6.) ALL DEVICES SHALL BE SET IN ACCORDANCE WITH THE MUTCD

TRAFFIC CONTROL CONTRACTOR:
 A-1 BARRICADE AND SIGN, INC.
 3448 ASTROZON PLACE
 COLORADO SPRINGS, CO 80910
 719-597-4847

PLAN NOT TO SCALE - CONCEPT ONLY



Woodmen Road

Academy Blvd.



WOODMEN ROAD

CONCRETE BANNER

ARROW BOARD

ACADEMY BLVD

300'

300'